

AI and AI Chatbots: ChatGPT and Google Gemini

- Venue: VSCA –Vietnamese Seniors Cultural Association ,
296 High St, Ashburton, 3147
- Date : 15 July 2025
- Time: 12:15pm -13:00pm
- Speaker: Mai Tran

Nội dung được trình bày



Những khái niệm trong lĩnh vực trí tuệ nhân tạo

Những mô hình AI-AI Models

AI và bộ não con người

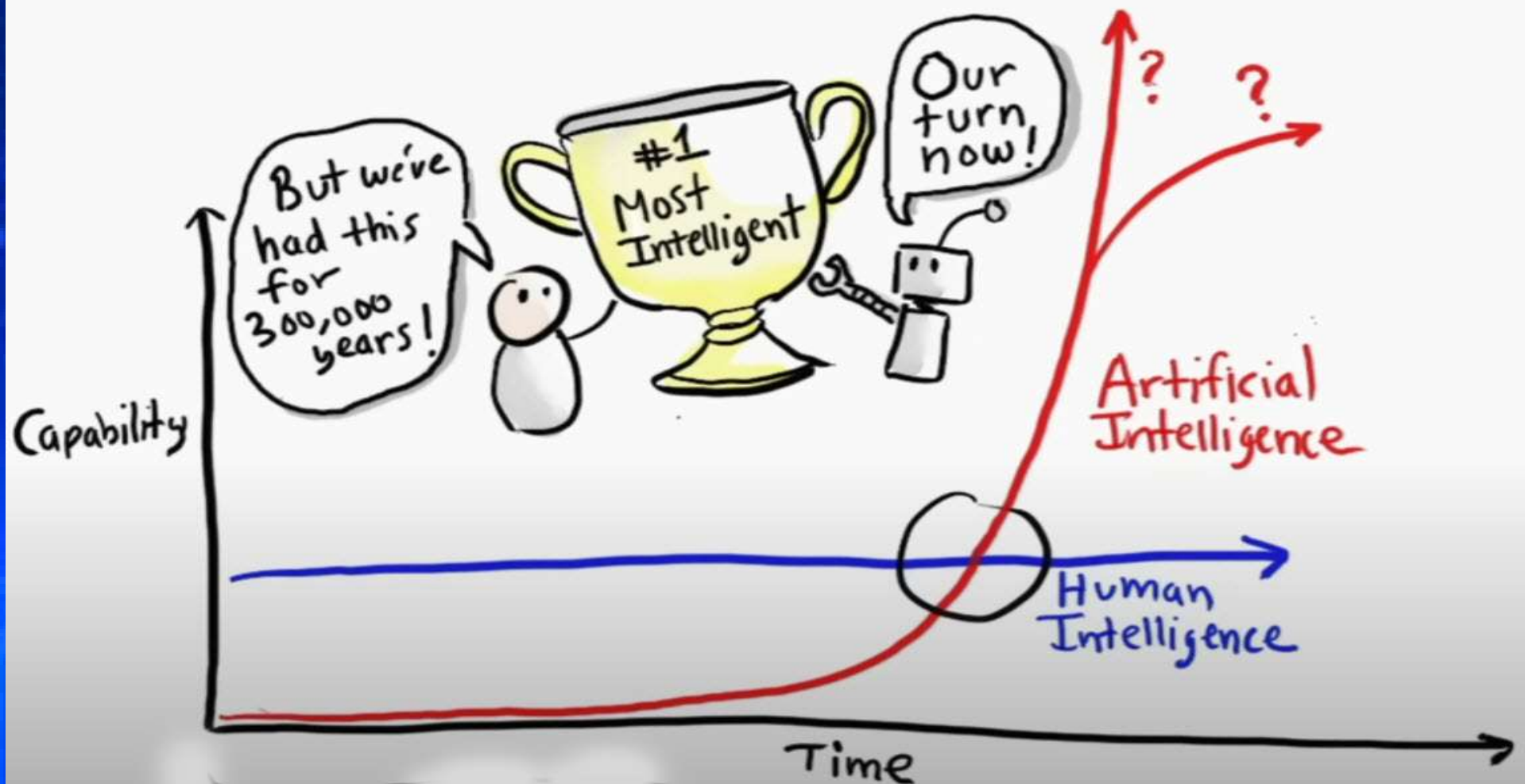
Lợi ích của AI

AI Chatbots-ChatGPT and Gemini

Prompt formula and Ví dụ-Examples

Những vấn đề quan trọng -xu hướng tương lai AI

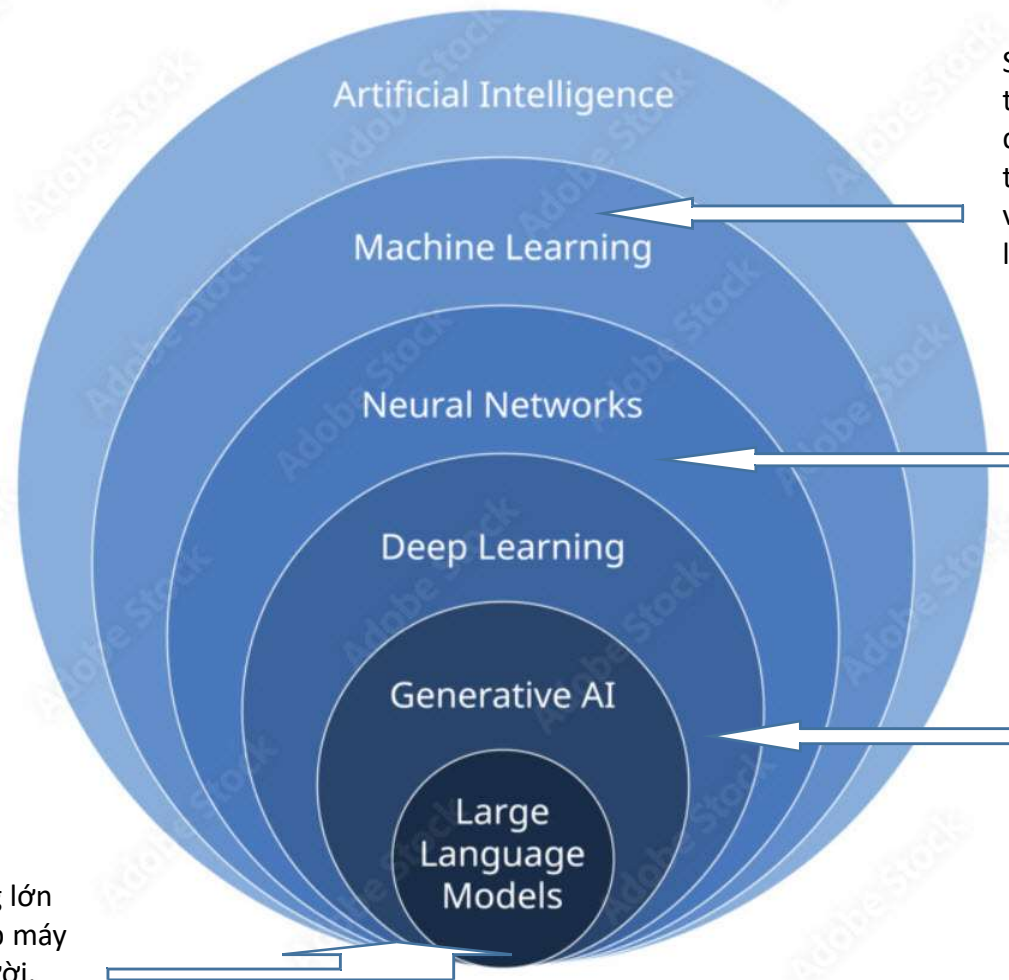
The Age of AI



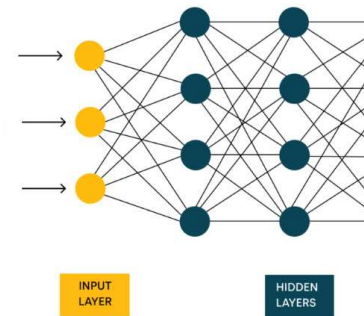
AI là gì ?

AI, viết tắt của trí tuệ nhân tạo, là một nhánh của khoa học máy tính, chuyên phát triển các hệ thống máy móc có khả năng thể hiện các hành vi liên quan đến trí thông minh của con người. Các chương trình AI sử dụng dữ liệu thu thập được từ các tương tác khác nhau để cải thiện cách chúng mô phỏng con người nhằm thực hiện các nhiệm vụ như học tập, lập kế hoạch, biểu diễn kiến thức, nhận thức và giải quyết vấn đề.

NLP (Xử lý ngôn ngữ tự nhiên) là một lĩnh vực rộng lớn của khoa học máy tính tập trung vào việc cho phép máy tính hiểu, diễn giải và tạo ra ngôn ngữ của con người, trong khi LLM (Mô hình ngôn ngữ lớn) là một loại mô hình cụ thể trong NLP có khả năng tạo và hiểu văn bản giống con người. Về bản chất, LLM là các công cụ được sử dụng trong lĩnh vực NLP rộng lớn hơn.



Subset AI, tập trung vào việc giúp tính tự học hỏi từ dữ liệu mà không được lập trình cụ thể. Phân biệt giữa trình cụ thể (dựa vào các quy tắc và lập trình không cụ thể (máy học thực tế))

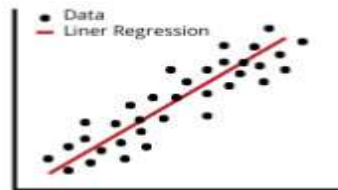


Deep Learning (Học sâu): Subset của Machine Learning các thuật toán lấy cảm hứng từ cấu trúc và chức năng của não bộ con người. Deep Learning nổi bật là mạng neuron nhân tạo (Neural Network). Deep Learning có ứng dụng như ChatGPT, Midjourney, v.v.

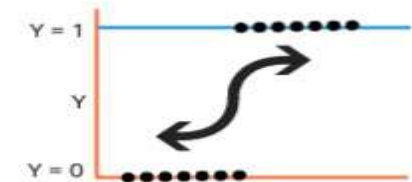
Trí tuệ nhân tạo (AI) là một loại trí tuệ nhân tạo tạo ra nội dung mới bằng cách học hỏi từ dữ liệu hiện có. Nội dung này có thể ở bất kỳ dạng nào như văn bản, hình ảnh, nhạc, mã, video, v.v.

Machine Learning Algorithms

Linear Regression



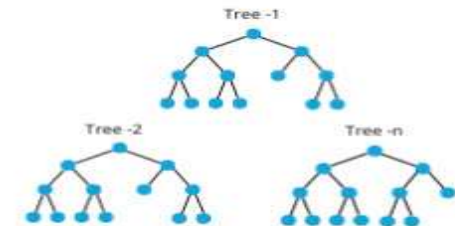
Logistic Regression



Decision Trees



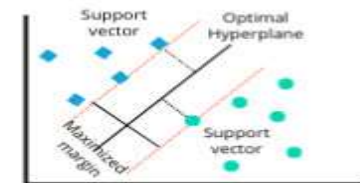
Random Forest



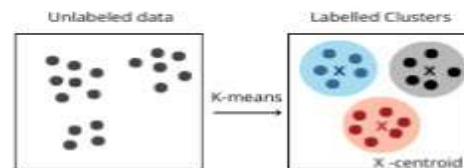
K-Nearest Neighbor



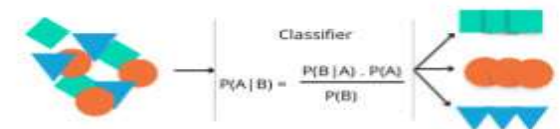
Support Vector Machine



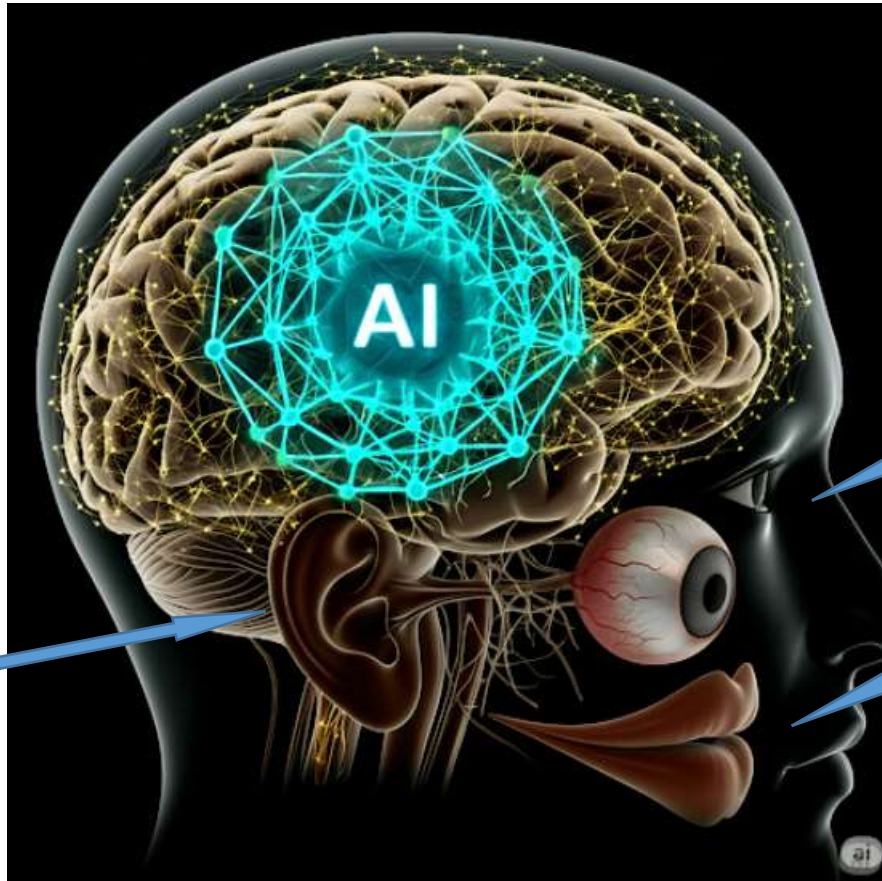
K-Means Clustering



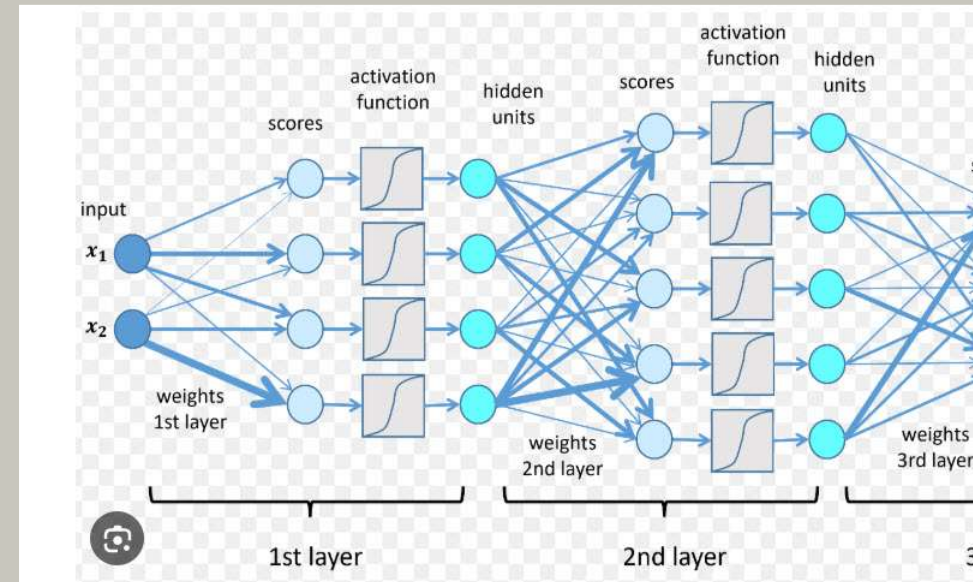
Naïve Bayes



Human brain and AI neural network



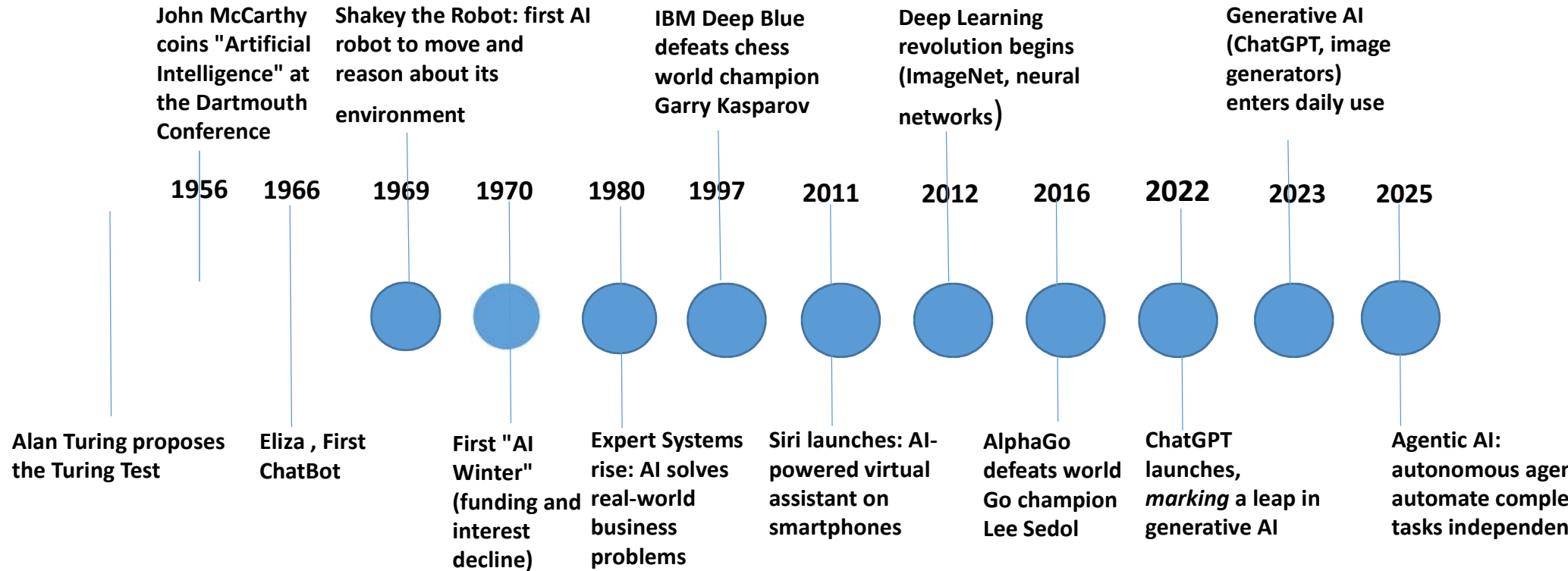
Audio,
Music
Models



Vision Models
(Image, Video...)

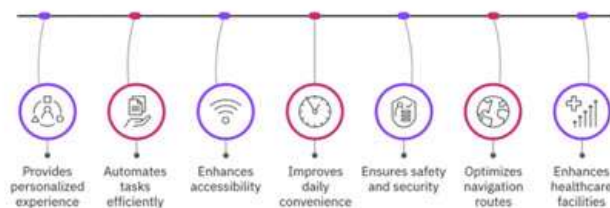
LLM Large
Language
Models

Timeline of AI development



AI in daily Life

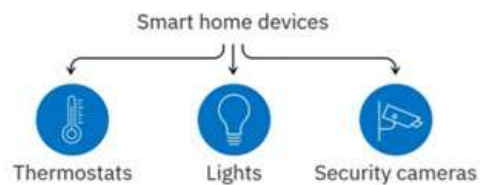
AI in daily life



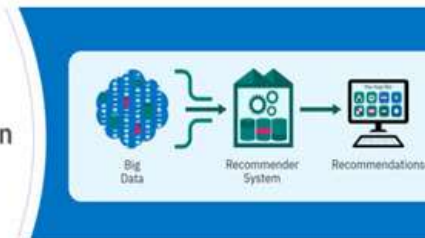
AI enabling efficiency and convenience



AI enabling efficiency and convenience



AI enabling personalization



AI enabling personalization



Social media platforms

- Facebook
- Instagram

E-commerce platforms

- Amazon
- eBay



- AI-driven chatbot**
- Handles customer queries

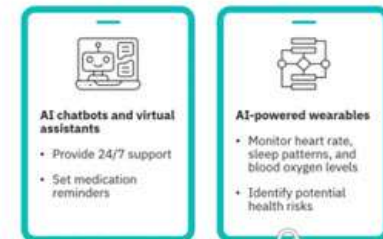


- Visual search technology**
- Allows uploading images to search products

AI enhancing security



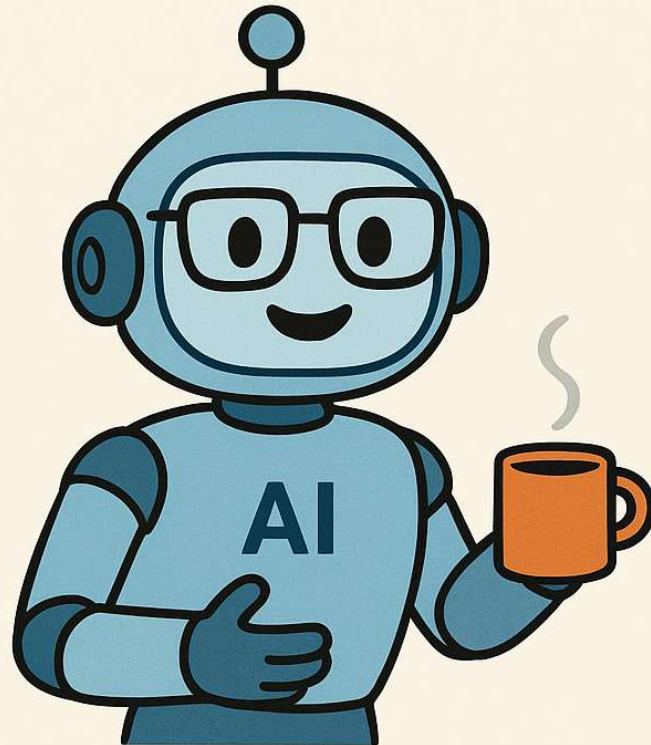
AI enabling improved health



AI's integration into smart devices



Meet Your New Digital Assistant!



You

What's the weather like
in Melbourne ?

Can you help me write
a birthday message?

Remind me to take
my pills at 8 PM.

Tell me joke!



Log on to get access to CHAT BOTS

ChatGPT Free Version (GPT-3.5)

- **Step 1: Go to the OpenAI Website:** Open your web browser and navigate to <https://chat.openai.com/>.
- **Step 2: Sign Up or Log In:** If you're a new user, you'll need to sign up for an OpenAI account. This usually involves providing an email address, creating a password, and verifying your email. If you already have an account, simply log in with your credentials.
- **Step 3: Start Chatting:** Once logged in, you'll see a chat interface. You can start typing your questions or prompts into the text box at the bottom of the screen.

Gemini (formerly Bard - Free Version)

- **Step 1: Go to the Gemini Website:** Open your web browser and go to <https://gemini.google.com/>.
- **Step 2: Log In with Google Account:** You'll need to be logged in with a Google account to use Gemini. If you're not already, you'll be prompted to log in.
- **Step 3: Accept Terms (if prompted):** The first time you use Gemini, you might need to agree to its terms of service.
- **Step 4: Start Conversing:** You'll see a chat interface similar to ChatGPT. Type your questions or prompts into the text box.

- **ChatGPT Plus (Paid, GPT-4 and other features):**

- **Gemini Advanced (Paid, uses Ultra 1.0 model):**

Prompt formula for AI language models integrates seven key elements: Task, Context, Example, Persona, Format, Tone and Refine.

- **Task:**

Clearly define the specific action the AI should perform. Examples include summarizing text, translating languages, generating creative content, or answering questions.

- **Context:**

Provide relevant background information or circumstances related to the task. This helps the AI understand the situation and nuances of your request.

- **Example:**

Offer a sample output or reference to guide the AI

Prompt Examples

- *Compare the advantages and disadvantages of electric cars versus gasoline cars.*
- *Give me five examples of conducting effective meetings*
- *Suggest a wedding plan for a young couple in District 1, Saigon, with a budget of approximately AUD 15,000, accommodating 100 guests at a restaurant (have a look at the response from ChatGPT and Gemini).*
- Create an image of a young couple dressed in traditional costume during Tet 2024 in country town in South Vietnam
- Detection and analyse an image

Chatgpt

Budget Overview (approx. 270 million VND)

Category	Budget (VND)	Budget (AUD)
Venue & Catering	140M	\$7,800
Wedding Attire (Couple)	20M	\$1,100
Photography & Videography	25M	\$1,400
Decoration & Flowers	25M	\$1,400
Entertainment (MC, music)	10M	\$560
Wedding Cake & Favors	10M	\$560
Invitations & Stationery	5M	\$280
Makeup & Hair (Bride)	5M	\$280
Miscellaneous / Contingency	30M	\$1,670
Total	270M	\$15,000

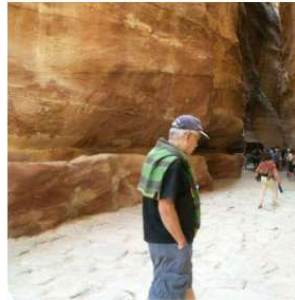
Gemini

Estimated Budget Breakdown (AUD 15,000 ~ 247,500,000 VND)

- **Venue & Catering (Restaurant):** 120,000,000 VND - 150,000,000 VND (approx. AUD 7,300 - AUD 9,100)
- **Decorations & Flowers:** 30,000,000 VND - 40,000,000 VND (approx. AUD 2,400)
- **Photography & Videography:** 20,000,000 VND - 30,000,000 VND (approx. AUD 1,800)
- **Wedding Attire (Dress & Suit):** 15,000,000 VND - 25,000,000 VND (approx. AUD 1,500)
- **Hair & Makeup:** 5,000,000 VND - 10,000,000 VND (approx. AUD 300 - AUD 600)
- **Wedding Cake:** 3,000,000 VND - 6,000,000 VND (approx. AUD 180 - AUD 360)
- **Entertainment (MC, Music):** 5,000,000 VND - 10,000,000 VND (approx. AUD 300 - AUD 600)
- **Invitations & Favors:** 5,000,000 VND - 8,000,000 VND (approx. AUD 300 - AUD 480)
- **Miscellaneous & Contingency (10%):** 20,000,000 VND - 25,000,000 VND (approx. AUD 1,200 - AUD 1,500)

create an image of a young couple dressed in traditional costumes during Tet 2024 in country town in south Vietnam

◆ Here is an image of a young couple dressed in traditional Vietnamese Tet costumes during Tet 2024 in a country town in South Vietnam:



Can I drive a car through

◆ Show thinking ▼

Based on the image you provided, showing a narrow canyon with towering rock walls, it appears to be **The Siq (Al-Siq)**, the main entrance to the ancient city of Petra in Jordan.

No, you **cannot drive a regular car** through The Siq. It is a natural geological fault and a protected historical site. Access is typically limited to:

- Walking
- Horse-drawn carriages (for a fee)
- Donkeys or camels (further into Petra)

The path is narrow in many places, and vehicle traffic would damage the ancient structures and the natural environment.

Tính năng khác biệt giữa ChatGPT and Google Gemini

Feature	ChatGPT-4o	Google Gemini 2.5
Developer	OpenAI	Google DeepMind
Multimodal Input & Output	Text, images, audio, video (real-time)	Faster processing Text, images, audio, video, code (native, seamless)
Context Window Size	Up to 128K tokens	1 million tokens (with plans for 2 million)
Speed & Latency	Fast, near real-time (esp. in voice & vision)	Very fast, optimized for low latency
Reasoning & Step-by-Step Logic	Improved step-by-step reasoning, strong at creative and logical tasks	"Deep Think" mode: advanced chain-of-thought reasoning, excels at math, coding, and complex planning
Coding & Developer Tools	Strong code generation, debugging, plugin support	Advanced code generation, architectural recommendations, native code analysis
Ecosystem Integration	Integrates with Microsoft Copilot, plugins	Deep integration with Google Workspace, Search, YouTube, Vertex AI
Personalization	Customizable tone, style, memory for preferences	Enhanced user context, multi-source data handling
Language Support	Over 50 languages, improved non-English handling	Wide language support, excels in technical language
Security & Privacy	Enhanced error handling, bias mitigation	Enhanced security, prompt injection mitigation
Voice Interaction	Advanced, expressive, real-time voice (new Voice Mode)	Native audio output with emotion-aware speech
Accessibility	Free and paid tiers, advanced features for Plus/Enterprise	Free access for many features, enterprise tools

AI and AI Chatbots: ChatGPT and Google Gemini

To be continued , next week

Some practice/ Test Prompt writing

AI agents

Agentic AI

Future of AI

Deepfake

Hallucination

Alien Agent- Super Intelligent Agent

**Revolutionary impacts : Jobs cut in Human resources,
Law, Medecine, Military, Social ...**

Jobs may be lost due to AI

- **Data Entry Clerks: AI can automate data entry tasks with greater speed and accuracy.**
- **Customer Service Representatives: AI-powered chatbots and virtual assistants can handle many routine customer inquiries.**
- **Bookkeepers and Accountants: Automated accounting software can perform many traditional bookkeeping and basic accounting tasks.**
- **Manufacturing and Assembly Line**